



Best aid
SAFEWAY

ISO-9001



SRT-500



SRT-400



SRT-630



SRT-800



STRT-125,170,202,256,322



分度盤特性：Features of NC Rotary Table

1. 強而有力材質~球狀石墨化鑄鐵FCD600-60kgs/mm² (80,000psi)抗張力強，不易變形
 2. 氣壓+油壓煞車系統(自動補償油壓油裝置，免用外掛增壓缸，已內建設計)
 3. 採用雙導程渦桿傳動
 4. 大孔徑設計(大孔徑軸承)
 5. 最強煞車機構(碟式煞車大徑活塞)，可以達到最高扭力加工需求，煞車能力不因長時間重切削而鬆弛
 6. 電氣箱防水設計，採用O型環密封設計，防水性極佳
 7. 電氣箱負壓設計，隨時充氣將切削水向外頂出，保持電氣箱乾燥
 8. 用交叉滾柱軸承
 9. 煞車檢出採用2只壓力開關(德國製)
 10. 電磁閥為日本原裝進口-SMC
 11. 銅渦輪材料為日本原裝進口
 12. 其它零組件均選用最高品質
 13. 以上全部均以型錄為標準
1. Rigid material-ductile iron FCD600 JIS (Equal to GGG-60)with 60kgs/mm² or 80,000psi tensile strength.
 2. Air hydraulic as the standard spec.: Installed the automatic oil-supplement appliance that replace the usage of hydraulic cylinder.
 3. Drive by Dual-Lead worm: Exceptional high-tensile brass.
 4. Large through hole design.
 5. Disc brake capacity: Maintain high torque for consistent usage.
 6. Electric box: Excellent waterproofed design by sealed with o-rings.
 7. Electric box: Keep dry and avoid penetration of cutting fluid by negative pressure mechanism.
 8. Crossed Roller Bearing: High Rigidity.
 9. Brake signal: 2 Pieces of pressure switch (Made in Germany).
 10. Solenoid valve: SMC (Made in Japan).
 11. Copper worm gear: Made in Japan.
 12. Highest quality of all components.
 13. All descriptions of product specification are in line with catalogue.



Best aid
SAFEWAY

ISO-9001



SRT-217



SRT-170



SRT-256



SRT-322



SRT-217FH-500



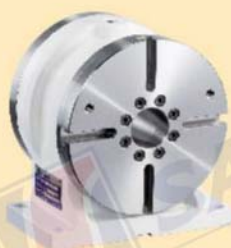
SRT-217FU-500



SRT-217FC-500-125



SRT-217FV-500-72-72



SRT-217F



SRT-217TM



SRT-217TP



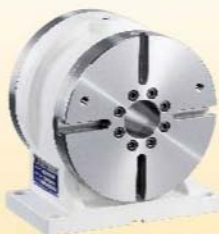
SRT-217TH

SRT- 170,217,256,322
400,500,630,800



P1-4

SRT- 170,217
256,322 -F



P9

SRT- 170,217
256,322 -TM



P10

SRT- 170,217
256,322 -TP



P11

300
SRT-170FU-500
650



P16

300
SRT-170FC- 500-100
650



P17

300
SRT-170FC-500 -125
650



P18

300
SRT-170FV- 500-72/72
650



P19

300
SRT-217FC-500 -125
650



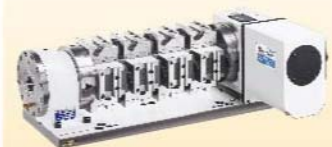
P24

300
SRT-217FV- 500-72/72
650



P25

300
SRT-217FV- 500-100/100
650



P26

300
SRT-217FV- 500-72/100
650



P27

500
SRT-256FC- 650 -150
800



P32

500
SRT-256FV- 650-72/72
800



P33

500
SRT-256FV- 650-100/100
800



P34

500
SRT-256FV- 650-72/100
800



P35

500, 650
SRT-322FC- 800, 950-150



P41.42

500, 650
SRT-322FV- 800, 950-72/72



P42.43

500, 650
SRT-322FV- 800, 950-100/100



P44.45

500, 650
SRT-322FV- 800, 950-72/100



P45.46

SRT- 170,217
256,322 -TH



P12

SC CHUCK



P13

SCF FLANGE



P13

SRT-170FH-300
500
650



P15

SRT-170FV-300
500-72/100
650



P20

SRT-217FH-300
500
650



P21

SRT-217FU-300
500
650



P22

SRT-217FC-300-100
650



P23

SRT-256FH-500
650
800



P28

SRT-256FU-500
650
800



P29

SRT-256FC-500-100
800



P30

SRT-256FC-500-125
800



P31

SRT-322FH-500, 650
800, 950



P36.37

SRT-322FU-500, 650
800, 950



P37.38

SRT-322FC-500, 650
800, 950-100



P38.39

SRT-322FC-500, 650
800, 950-125



P40.41

NC TILTING ROTARY TABLE
STRT-125,170,202,256,322



P5-8

AC SERVO CONTROLLER
AC單軸控制器



P47.48

SIT 450, 500, 600, 700, 800, 900,
1000, 1100, 1200, 1300, 1400, 1500



P49.50