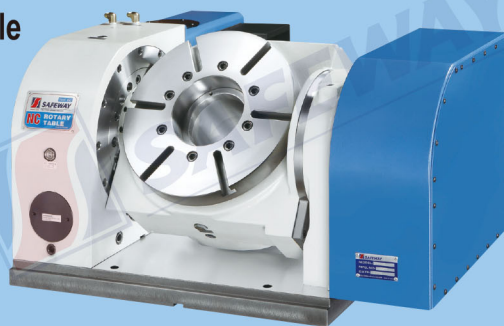




STRT

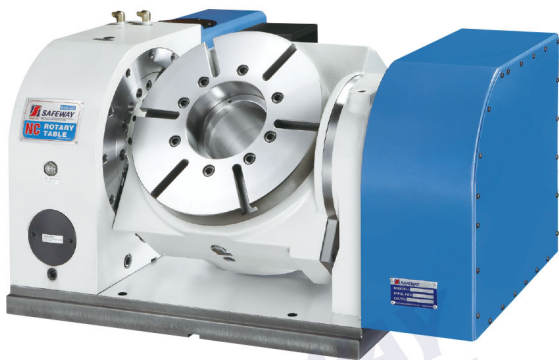
NC Tilting Rotary Table
NC 五軸分度盤
125, 170
202

High rigidity / 高剛性
High precision / 高精度
High clamping torque / 高扭力

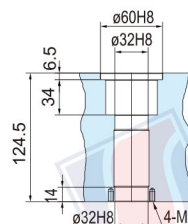
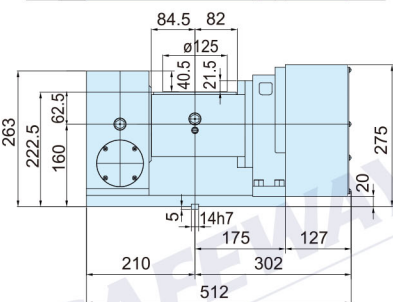
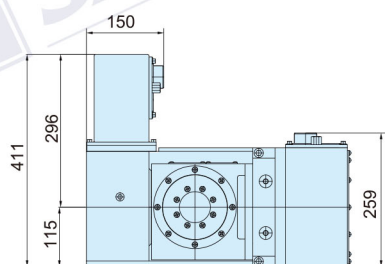


Application for 5 axis Machining

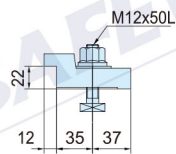
Order No.	訂購編號	40000125		40000170		40000202	
Model	型 號	STRT-125		STRT-170		STRT-202	
Table diameter	面盤直徑	ø125		ø170		ø202	
Center height	中心高度	160		180		180	
Center hole	Table nose dia.主軸鼻端孔	ø60H7		ø50H7		ø50H7	
主軸孔徑	Through hole 主軸貫穿孔	ø32		ø40		ø40	
Table T-slots width	面盤T槽	12H8 (附面盤)		12H8		12H8	
Guide block width	導正鍵	14h7		18h7		18h7	
Axis 軸向		Rotating 回轉軸	Tilting 傾斜軸	Rotating 回轉軸	Tilting 傾斜軸	Rotating 回轉軸	Tilting 傾斜軸
Gear ratio	齒輪減速比	1/72	1/72	1/72	1/90	1/72	1/90
Table max. rpm (Motor rpm:min ⁻¹)	最高轉速	69.4	69.4	69.4	55.5	69.4	55.5
Indexing accuracy(arc.sec)	割出精度	30 sec	60 sec	30 sec	60 sec	30 sec	60 sec
Repeatability accuracy(arc.sec)	重覆精度	4 sec	4 sec	4 sec	4 sec	4 sec	4 sec
Clamping torque (N.m)	Pneumatic 6kg/cm ² 氣壓	Pneumatic	Pneumatic	Pneumatic	Pneumatic	Pneumatic	Pneumatic
煞車扭力	Hydraulic 35 kg/cm ² 油壓	氣 壓	氣 壓	氣壓/油壓	氣壓/油壓	氣壓/油壓	氣壓/油壓
Servo motor (FANUC)	驅動馬達	iF2 / 5000	iF2 / 5000	iF2 / 5000	iF2 / 5000	iF2 / 5000	iF2 / 5000
Tilting capacity	容許傾斜角度	0-360 °	+45-110 °	0-360 °	+45-110 °	0-360 °	+45 -110 °
Net weight (kg)	淨重	92		140		145	
Allowable work weight 容許工件重量	Horizontal setting (kg) 水平負荷	50		60		60	
	Vertical setting (kg) 傾斜負荷	30		40		40	
Allowable load (When table is clamped) 容許煞車扭力負荷	F(kN)	4		5		5	
	FxL(N-m)	280		800		800	
	FxL(N-m)	500		450		450	
Allowable work inertia 容許切削慣性矩	WxL (kgf. m)	11		12		12	
Driving torque 容許切削扭力	T(N-m)	190		250		250	



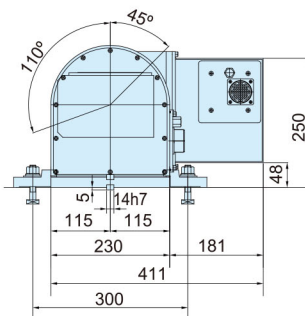
• 40000125 MODEL: STRT-125



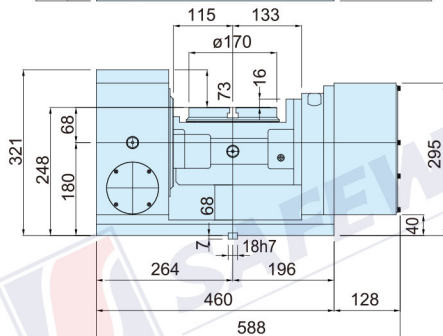
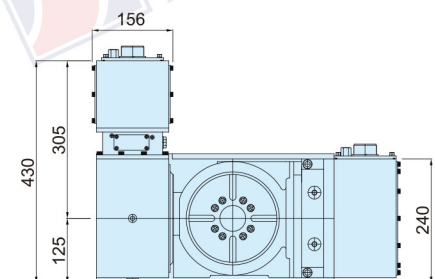
Thru-hole Dia.
主軸貫穿孔



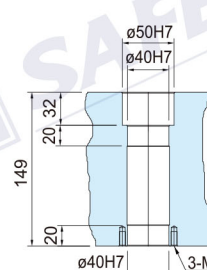
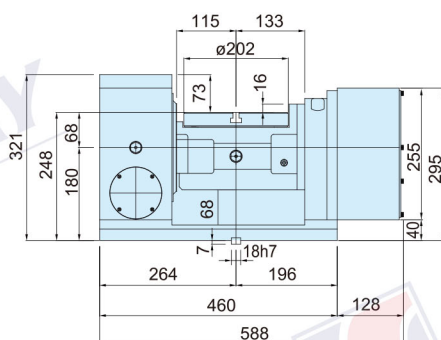
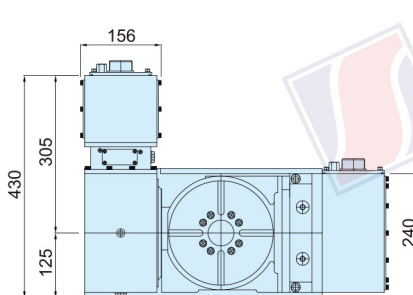
Clamping device
壓塊



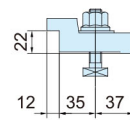
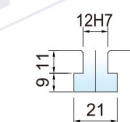
• 40000170 MODEL: STRT-170



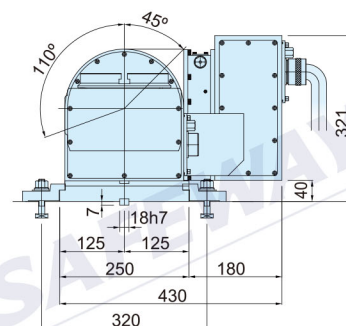
• 40000202 MODEL: STRT-202



Thru-hole Dia.
主軸貫穿孔



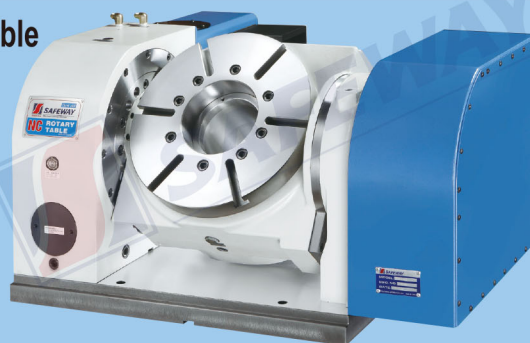
Clamping device
壓塊





STRT

NC Tilting Rotary Table
NC 五軸分度盤
256, 322



High rigidity / 高剛性
High precision / 高精度
High clamping torque / 高扭力

Application for 5 axis Machining

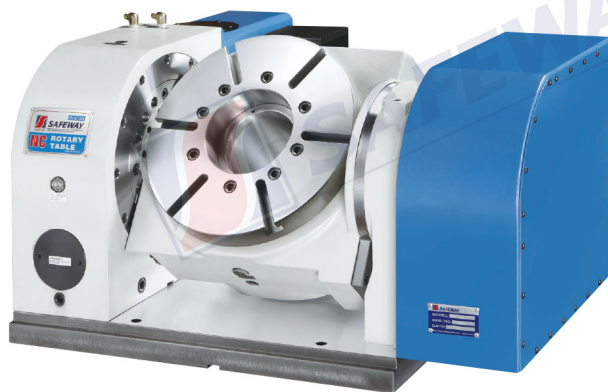
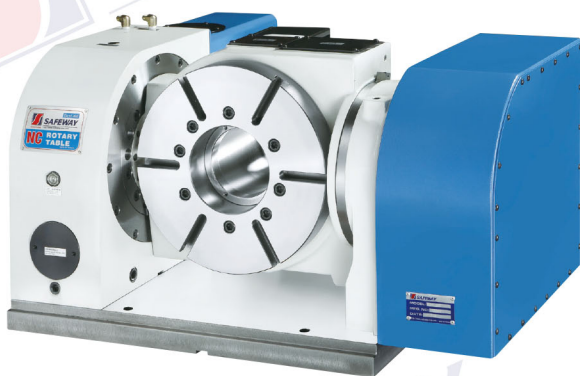
Order No.	訂購編號	40000256		40000322	
Model	型號	STRT-256		STRT-322	
Table diameter	面盤直徑	ø256		ø322	
Center height	中心高度	225		255	
Center hole	Table nose dia. 主軸鼻端孔	ø105H7		ø135H7	
主軸孔徑	Through hole 主軸貫穿孔	ø78		ø110	
Table T-slots width	面盤T槽	12H8		14H8	
Guide block width	導正鍵	18h7		18h7	
Axis		Rotating		Tilting	
軸向		回轉軸		傾斜軸	
Gear ratio	齒輪減速比	1/90		1/90	
Table max. rpm		55.5		25	
(Motor rpm:min ⁻¹)	最高轉速	33.3		25	
Indexing accuracy(arc.sec)	割出精度	20 sec		45 sec	
Repeatability accuracy(arc.sec)	重覆精度	4 sec		4 sec	
Clamping torque (N.m)		Hydraulic		Hydraulic	
煞車扭力	Hydraulic 35 kg/cm ² 油壓	油壓		油壓	
Servo motor (FANUC)	驅動馬達	iF4/5000	iF8/3000	iF4/5000	iF8/3000
Tilting capacity	容許傾斜角度	0-360 °		+45-110 °	
Net weight (kg)	淨重	280		400	
Allowable work weight 容許工件重量	Horizontal setting (kg) 水平負荷	100		150	
	Vertical setting (kg) 傾斜負荷	60		100	
Allowable load (When table is clamped) 容許煞車扭力負荷	F(kN)	12		16	
	FxL(N-m)	1200		2600	
	FxL(N-m)	900		2600	
Allowable work inertia 容許切削慣性矩	WxL (kgf. m)	26		75	
Driving torque 容許切削扭力	T(N-m)	600		1000	



Best aid
SAFEWAY

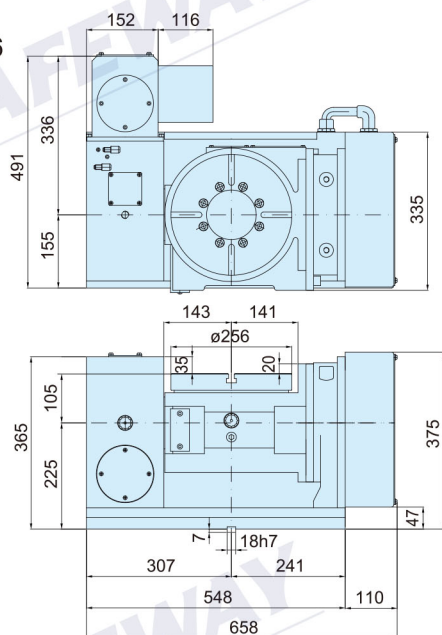
ISO-9001

Dimension / 外形尺寸圖



• 40000256

MODEL: STRT-256



Thru-hole Dia.
主軸貫穿孔

Ø105H7

Ø92

Ø78H7

3-M6

20

39

209

20

Ø78H7

Ø92

6-M8

45°

110°

339

61

155

175

330

491

400

18h7

7

161

Clamping device
壓塊

25

14.5

33.5

43

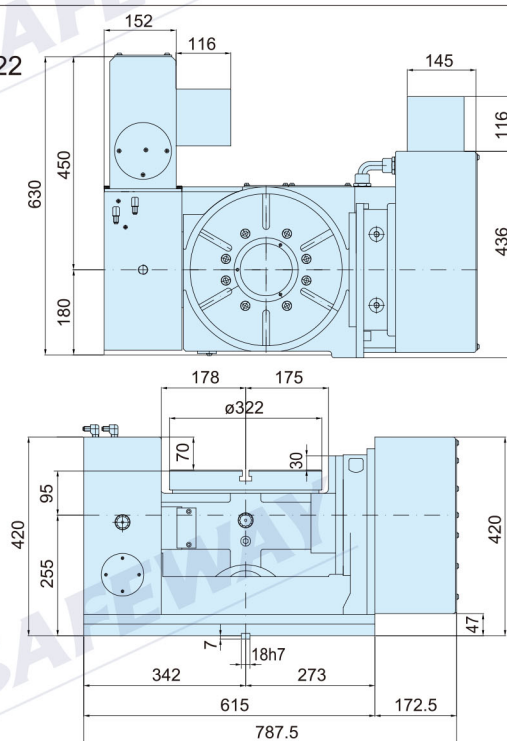
12H7

9.11

21

• 40000322

MODEL: STRT-322



Thru-hole Dia.
主軸貫穿孔

Ø135H7

Ø121

Ø110H7

3-M6

20

45

224

20

Ø110H7

Ø124

8-M8

45°

110°

398

66

180

175

355

630

424

18h7

7

275

Clamping device
壓塊

25

14.5

33.5

43

14H7

10.13

25